

# Rotokare Scenic Reserve Trust predator trap-catch summary.

Total pests caught at Rotokare Mainland Island 2004-05

	Jun-04	Jul-04	Aug-04	Sep-04	Oct-04	Nov-04	Dec-04	Jan-05	Feb-05	Mar-05	Apr-05	May-05	Jun-05	Jul-05	Aug-05	Sep-05	Oct-05	Total	
Stoats	0	5	6	0	2	4	18	14	2	1	4	3	3	3	4	3	1	73	3.2%
Ferrets	0	1	0	1	0	0	0	1	0	0	2	0	0	0	0	1	0	6	0.3%
Weasels	0	1	0	0	3	5	1	1	1	1	0	4	0	1	1	1	1	21	0.9%
Feral cats	1	2	1	0	0	2	1	0	1	2	1	3	0	1	2	1	1	19	0.8%
Rats	4	18	10	8	10	4	9	9	29	21	27	48	15	326	361	192	156	1247	54.6%
Hedgehogs	1	10	10	18	64	33	48	49	76	75	79	47	17	7	1	21	12	568	24.9%
Rabbits	0	1	1	4	5	7	4	5	2	2	5	1	0	3	2	5	8	55	2.4%
Mice	0	0	0	0	0	0	0	0	0	0	1	0	0	54	82	30	103	270	11.8%
Possums	0	0	0	0	0	0	0	0	0	0	1	0	0	2	13	6	3	25	1.1%
Sprung & empty trap	0	8	15	7	9	35	22	9	32	14	7	26	6	39	19	17	10	275	
No. of traps	120	120	120	120	160	252	252	252	252	252	252	252	252	458	600	648	648	648	
<b>Total pests</b>	<b>6</b>	<b>38</b>	<b>28</b>	<b>31</b>	<b>84</b>	<b>55</b>	<b>81</b>	<b>79</b>	<b>111</b>	<b>102</b>	<b>120</b>	<b>106</b>	<b>35</b>	<b>397</b>	<b>466</b>	<b>260</b>	<b>285</b>	<b>2284</b>	<b>100%</b>
Mustelids	0	7	6	1	5	9	19	16	3	2	6	7	3	4	5	5	2	93	

Trapping and data collection carried out by the **Rotokare Scenic Reserve Trust**. For more information please contact the Trust's trapping project co-ordinator:  
**Murray Sulzberger**, Eltham.  
 Phone: (06) 764 8561  
 Email: [md.am.sulzberger@xtra.co.nz](mailto:md.am.sulzberger@xtra.co.nz)



Data presented by Cees Bevers, Oecologico Ltd:

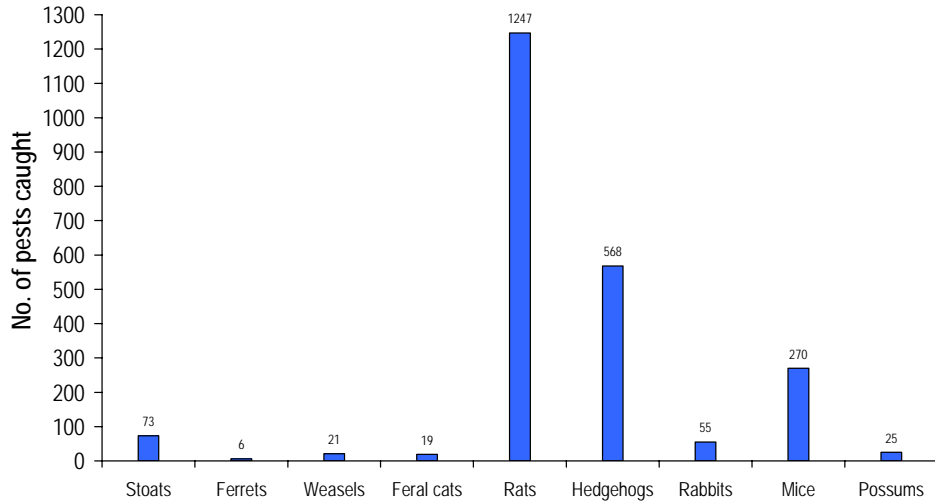
**Oecologico Ltd.**

P.O. Box 7139, New Plymouth

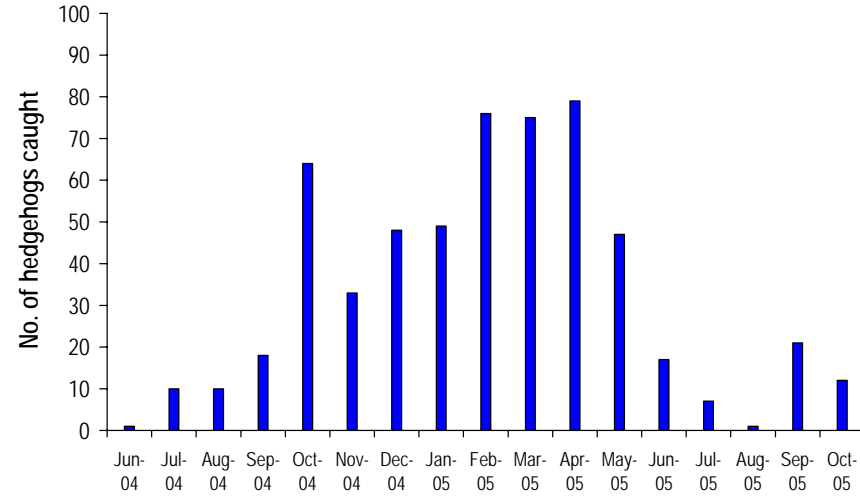
Ph [06] 759 8005 fax [06] 759 8006

mobile [027] 660 4041 [oecologico@xtra.co.nz](mailto:oecologico@xtra.co.nz)

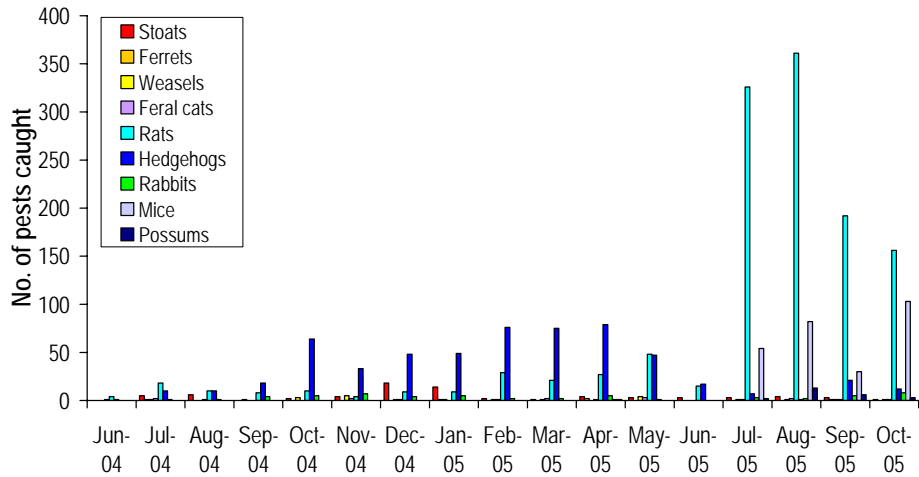
### Rotokare Mainland Island total pest trap-catch



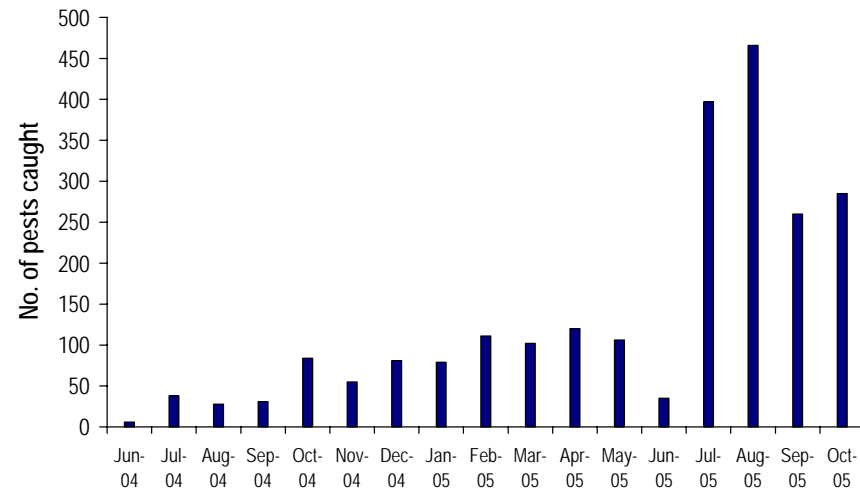
### Rotokare Mainland Island Hedgehog trap-catch



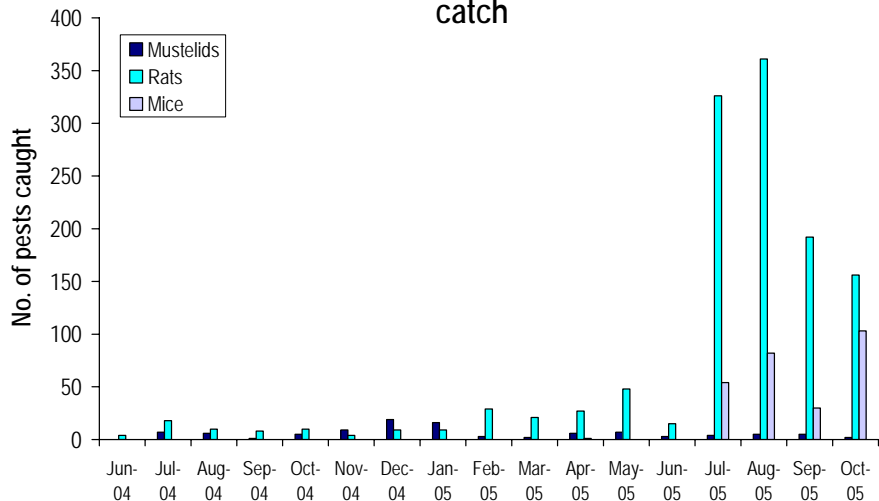
### Lake Rotokare Mainland Island trapping programme catches



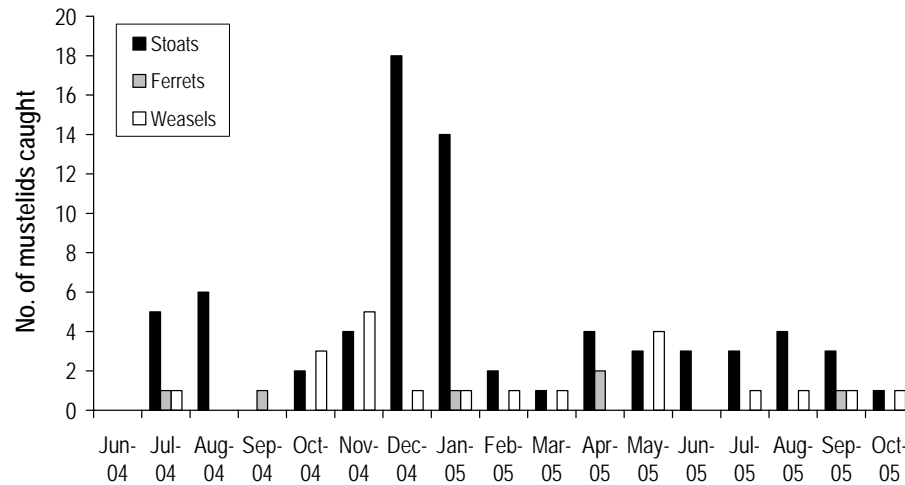
### Rotokare Mainland Island total monthly trap-catch



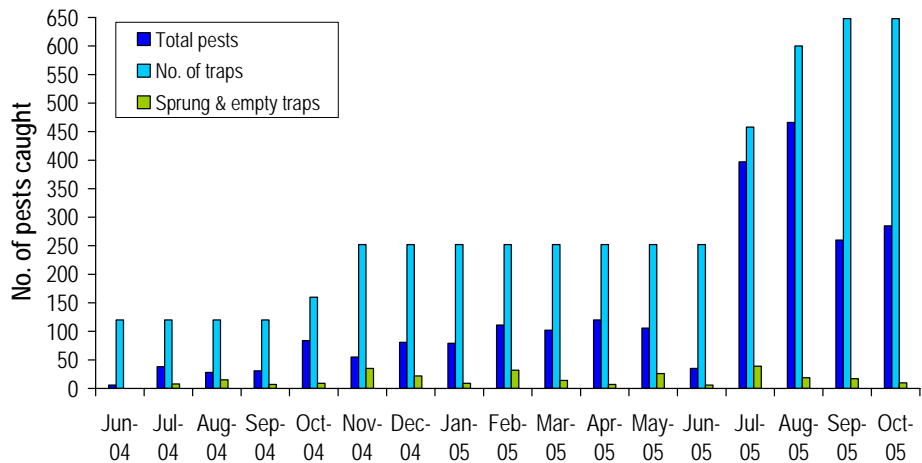
Rotokare Mainland Island mustelid and rodent trap-catch



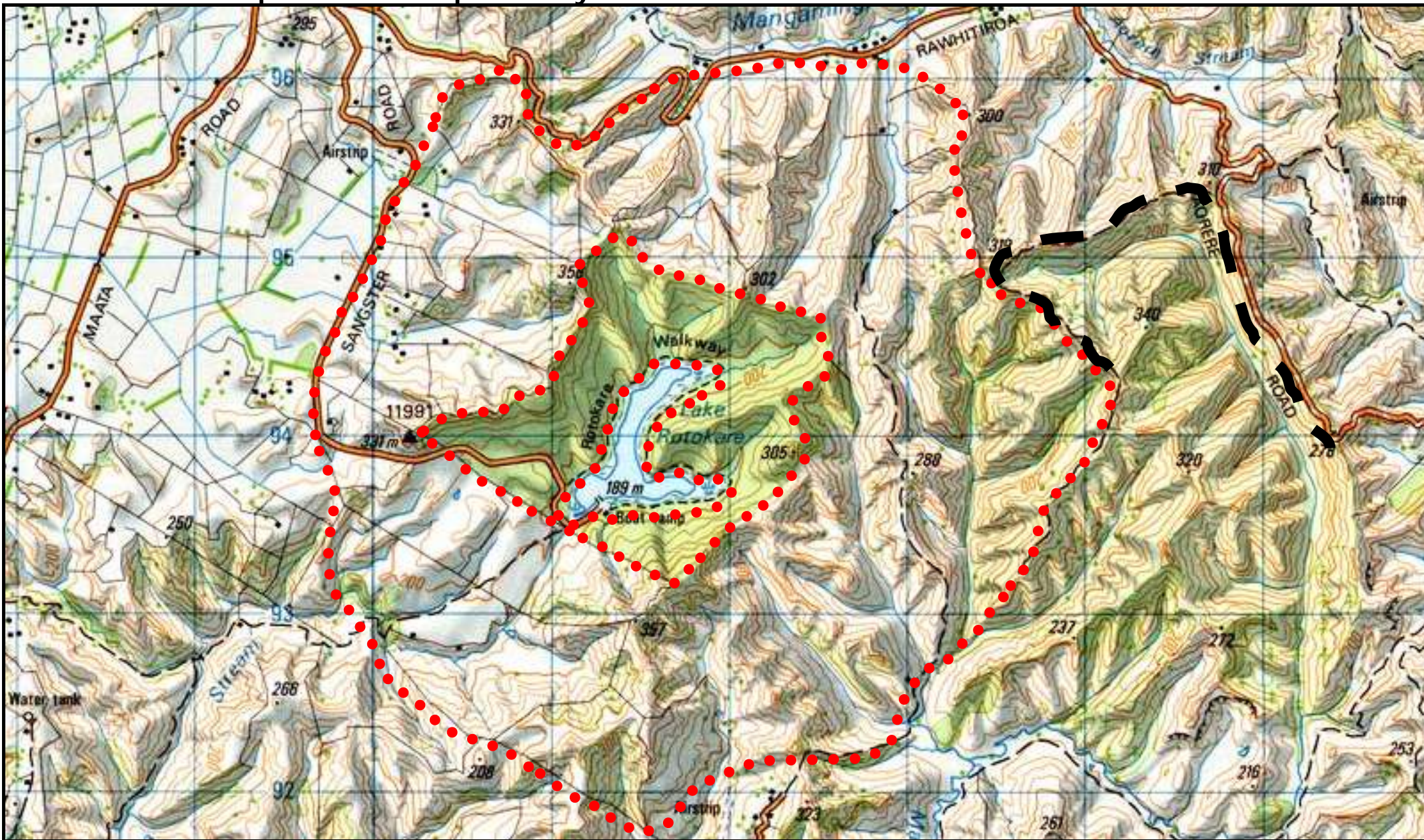
Rotokare Mainland Island mustelid trap-catch



Rotokare Mainland Island total monthly catch, trap no. and sprung & empty traps



# Map 1: Stoat trap-line lay-out for "Lake Rotokare Mainland Island"



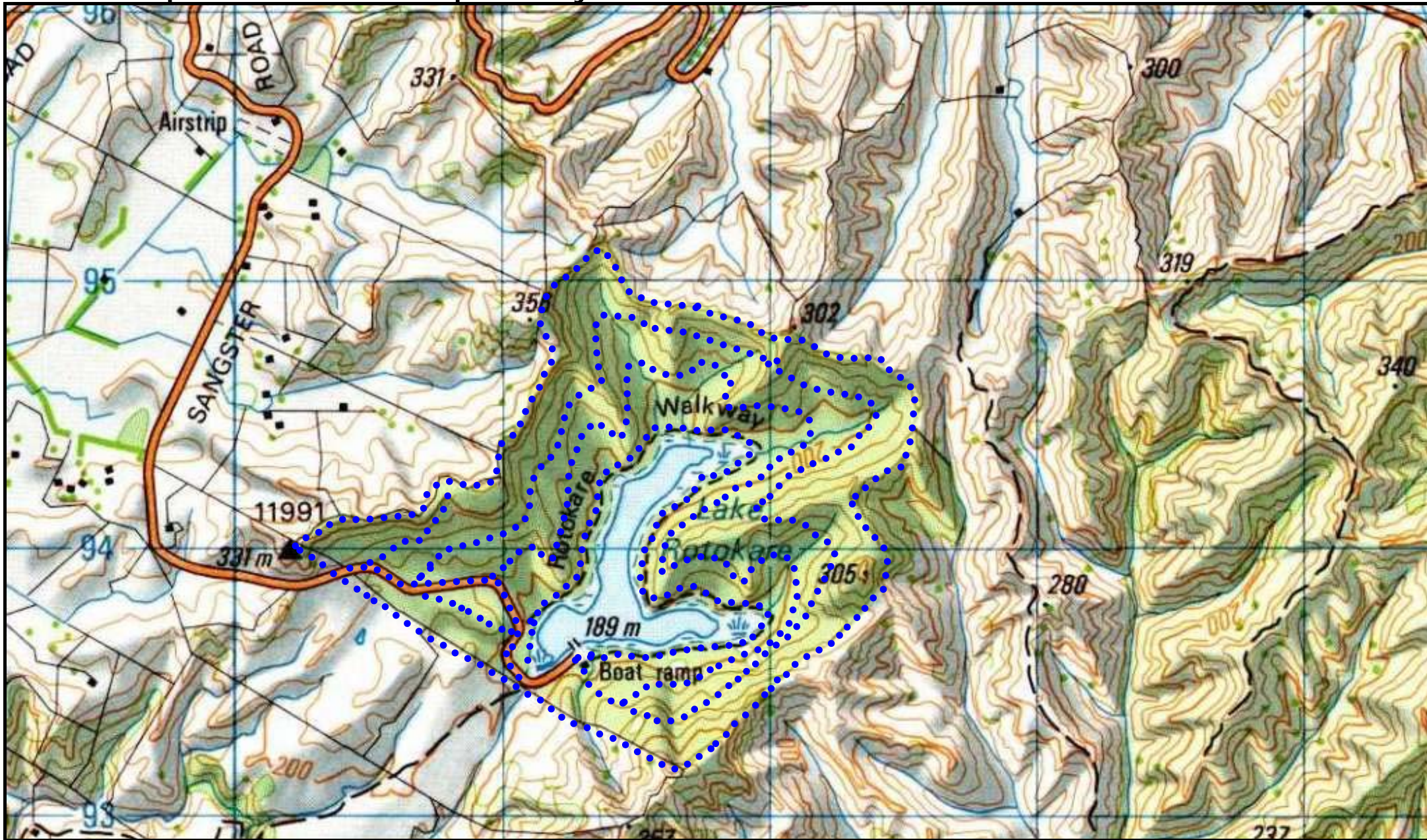
Stoat trap-lines



Existing Forest & Bird trap-lines



## Map 2: Planned rat trap-line lay-out for "Lake Rotokare Mainland Island"



Note: The inner Lake-edge and outer Reserve boundary trap-lines are stoat trap-lines (Map 1, previous) supplemented with rat traps.