

What you need:

- ☺ Timber (untreated, preferably use timber that would otherwise be useless)
Approx 550mm long x 100mm wide
- ☺ Corflute (old real estate signs, rescue these before they are sent to the dump)
Approx 550mm long x 550mm wide
- ☺ 1x 2 or 3 litre milk bottle
- ☺ Sponge
- ☺ Hot glue guns
- ☺ Gun stapler
- ☺ Vivid
- ☺ Food colouring and water mixture 1:3 ratio
- ☺ Bait (peanut butter works really well)

How to create your tunnel

1. Take the piece of timber, use this to measure the corflute size needed to create the tunnel.

2. Cut the corflute to size if too big, fold the corflute to form a tunnel, and staple the sides to the timber base (this creates the simple tunnel – this can be painted and camouflaged etc). Be sure to fold the corflute with the grain.

3. To make the tracking tunnel tray, cut the bottom of the milk bottle (to create a tray), then cut two sides from the bottle (for the cardboard/paper to lay – for collecting prints).

4. Using the hot glue gun, connect the two milk bottle sides to the tray.

5. Cut the sponge to fit inside the tray, attach paper to either side of the tray using tape or bluetack, and fill the tray with the food colouring: water mixture, and then bait the centre of the sponge.

6. Slide the completed tray into the tunnel (it's a good idea to fill the tray and bait the sponge at the site you want to put the tunnel).



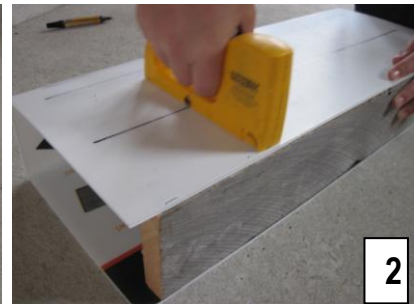
1



2



2



2



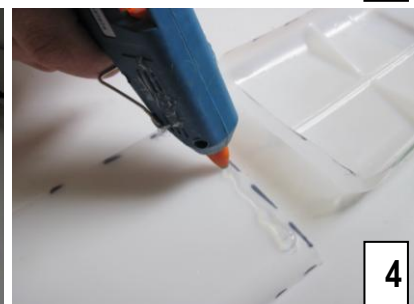
3



3



4



4



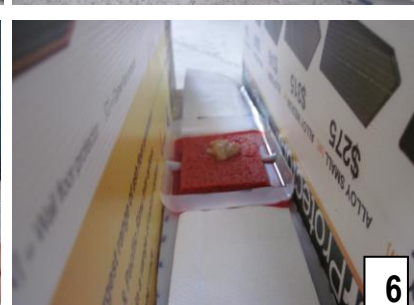
5



5



6



6